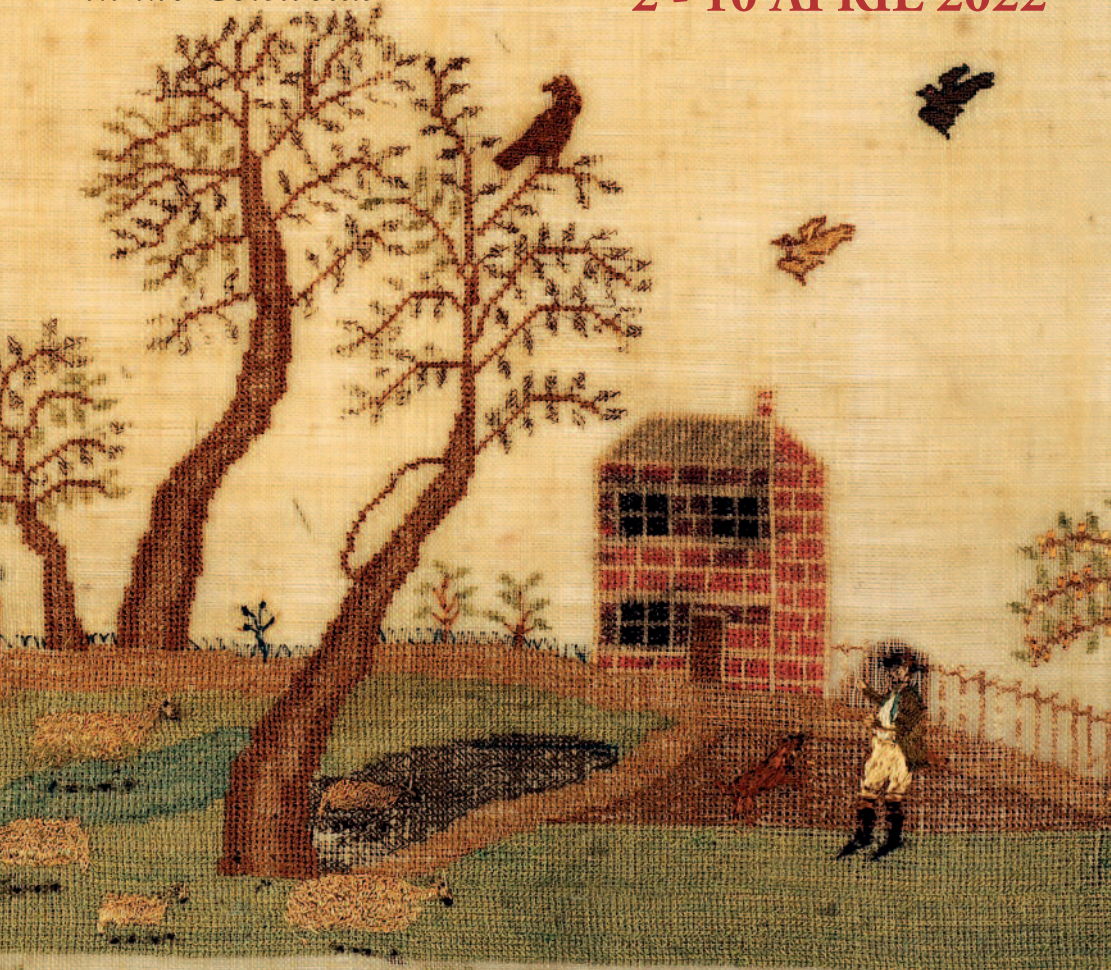


# COTSWOLDS CURATED

*A week of Exhibitions selling  
Fine Art and Antiques  
in the Cotswolds*

**2 - 10 APRIL 2022**



Martha  
Cray  
Oxford  
1811

# COTSWOLDS CURATED



The Cotswold Art and Antiques Dealers' Association (CADA) is proud to present to you a curated collection of exhibitions taking place from 2nd to 10th April 2022.

Nine CADA members are taking part, showcasing fine art and antiques within their specialist area of expertise. From campaign furniture to carpets, textiles and samplers, art and sculpture from the 19th century to Modern British and fine furniture from the Georgian period to the Cotswold School, a broad spectrum of interests will be on show.

The Cotswolds is renowned for its scenic beauty and with the map you can plan your route to enjoy not only our curated exhibitions, but also visit some of our other dealer members, to sample the very best that Britain's largest provincial antiques dealers' association has to offer. For more information on the exhibitions and membership please do visit our website.

On behalf of all the CADA members I wish to thank you for your interest and support, and we, the CADA, look forward to welcoming you to the Cotswolds Curated exhibitions.

Alex Puddy  
Chairman

[www.thecada.org](http://www.thecada.org)



*Save the Date*

**13 - 16 OCTOBER 2022**

**THE COTSWOLD  
ART & ANTIQUES DEALERS'  
ASSOCIATION FAIR**

COMPTON VERNEY ART GALLERY & PARK  
COMPTON VERNEY, WARWICKSHIRE CV35 9HZ



For further information and  
complimentary invitations  
please visit [www.thecada.org](http://www.thecada.org)



## 1 ARCHITECTURAL HERITAGE

Taddington Manor  
**Taddington GL54 5RY**  
T: 01386 584414

E: office@architectural-heritage.co.uk  
W: www.architectural-heritage.co.uk

*Opening Times*  
Sat 2nd April - Sun 10th April  
11.00am - 4.00pm



## EVOLUTION TO EXTINCTION AND BACK

A journey through modern British Sculpture

Our starting point - Edward Bainbridge Copnall's 'The Evolution' though one of his first carved works, this was, in fact, the beginning of the end of this genre of sculpture. Our extinction point - the Dinosaur drawings by Bryan Kneale.

*The Evolution*  
Edward Bainbridge Copnall 1903 -1973  
Portland stone. Circa 1930

## 2 DAVID PICKUP

BY APPOINTMENT ONLY  
**Cheltenham**  
M: 07860 469959

E: david@davidpickupantiques.com  
W: www.davidpickupantiques.com

Exhibition at:  
Taddington Manor  
**Taddington GL54 5RY**

*Opening Times*  
Sat 2nd April - Sun 10th April  
11.00am - 4.00pm



*PETER WAALS 1870-1937*  
A well-drawn Cotswold Movement walnut, three-drawer, side table of good untouched colour and all the quality you would expect. Circa 1930.  
Height: 30 inches Width: 40 inches Depth: 22 inches

## 'ON THE COTSWOLD HILLS'

A selection of fine English furniture and works of art dating from the 17th to the 20th century to include Cotswold arts and crafts pieces made on these Cotswold Hills.

## 3 TRINITY HOUSE PAINTINGS

Head Office  
35 High Street  
**Broadway WR12 7DP**  
T: 01386 859329

E: art@trinityhousepaintings.com  
W: www.trinityhousepaintings.com

*Opening Times*  
Sat 2nd April - Sun 10th April  
Monday - Saturday  
10.00am - 5.00pm  
Sunday  
10.00am - 4.00pm



## THE SPRING SALON 2022

We will be exhibiting highlights from our latest collection of paintings and sculpture, featuring a carefully curated selection of Impressionist, Modern British and Contemporary pieces.

*Francis Campbell Boileau Cadell*  
(British, 1883 - 1937)  
Corn Marigolds  
Oil on board  
Signed 'FCB Cadell' (lower left)  
Framed: 18.6 x 15.7 inches  
(47.3 x 40 cms)

## 4 HAYNES FINE ART

Picton House Galleries  
42 High Street,  
**Broadway WR12 7DT**

T: 01386 852 649  
E: email@haynesfineart.com  
W: www.haynesfineart.com

*Opening Times*  
Sat 2nd April - Sun 30th April  
9.30am - 5.30pm  
Sundays  
10.00am - 4.00pm



## SPRING EXHIBITION

A selling exhibition of 19th to 21st Century art and sculpture. Over 300 pieces, beautifully displayed in our award winning Broadway, Cotswolds, Gallery.

*Spring's Rewards*  
by Cecil Kennedy  
Oil on canvas, signed lower right  
Canvas size 26 x 20 ins

## 5 CHRISTOPHER CLARKE ANTIQUES LTD

Sheep Street  
**Stow-on-the-Wold GL54 1JS**  
T: 01451 830476  
E: clarkeltd@btconnect.com  
W: www.campaignfurniture.com

*Opening Times*  
Sat 2nd April - Sun 10th April  
9.00am - 5.30pm  
Sundays  
10.00am - 4.00pm



*Gen. Stewart's Anglo Indian*  
Secretaire Campaign Chest. Circa 1840

## FURNISHING THE EMPIRE

18th, 19th & 20th Century  
Campaign Furniture & Travel Items

An extraordinary range of items were made to ease the life of a British soldier or traveller. The furniture and accessories they used from campaign chests and tables to lighting and folding globes all make up our Furnishing The Empire exhibition.

Catalogue available.

## 6 WITNEY ANTIQUES

100 Corn Street  
**Witney OX28 6BU**  
T: 01993 703902 M: 07836 350351  
E: specialist@witneyantiques.com  
W: www.witneyantiques.com

*Opening Times*  
Sat 2nd Sun 3rd April 10.30am - 4.00pm  
Mon 4th April 10.30am - 1.00pm  
Tues 5th April Closed  
Wed 6th April to Sat 9th April  
10.30am - 4.00pm  
Sun 10th April Closed

## A SCHOOL ROOM EXERCISE

Samplers of the Eighteenth and Nineteenth Centuries





**7 W. R. HARVEY & CO (ANTIQUES) LTD**

86 Corn Street  
**Witney OX28 6BU**  
 T: 01993 706501  
 E: antiques@wrharvey.com  
 W: www.wrharvey.com



Highly figured James II period walnut bureau cabinet

**BITING MY TRUANT PEN**

Special exhibition of English antique writing furniture over two centuries

A special exhibition of English antique furniture, covering the reigns of eleven monarchs, here in Britain

As Sir Philip Sidney wrote in his sonnet:-

Biting my Truant pen  
 Beating myself for spite  
 'Fool' said my Muse to me  
 'Look in thy heart and write'

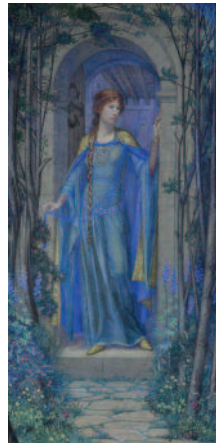
Astrophil and Stella (1591) Sonnet 1

*Opening Times*

Sat 2nd April-Sun 10th April  
 10.00am - 5.00pm

**8 SARAH COLEGRAVE**

BY APPOINTMENT ONLY  
**Banbury, Oxfordshire**  
 M: 07775 943722  
 E: sarah@sarahcolegrave.co.uk  
 W: www.sarahcolegrave.co.uk



**THE COTSWOLD GROUP**

Paintings by Cotswold Members of the Birmingham School of Artist-Craftsmen

This exhibition mainly focuses on works by those members who settled in the Cotswolds including Charles and Margaret Gere, Bernard Sleigh, Henry Payne, Arthur Gaskin, Kate Eadie, Maxwell Armfield and Frederick Cayley Robinson.

KATE EADIE, RMS (1880-1945)

*Fair Rosamond*

Signed and inscribed.

Watercolour and bodycolour.

73 by 35.5 cm. (frame size 110 by 52 cm.)

*Opening Times*

Sat 2nd April-Sun 10th April  
 10.00am - 5.00pm  
 Sundays 11.00am - 4.00pm

Exhibition at:  
 Number 14 Market Square  
**Woodstock OX20 1TA**

**9 LEGGE CARPETS •TEXTILES**

25 Oakthorpe Road  
**Oxford OX2 7BD**  
 T: 01865 557572  
 E: info@leggecarpets.com  
 W: www.leggecarpets.com



Afshar bag, southern Iran, 3rd quarter 19th century. Original ends and loops, one half of a khorjin. Field design of six stylised botehs, each filled with a flowery shrub. All natural dyes.

55 cm x 93 cm

**TRIBAL WEAVINGS**

Bags, Rugs and Carpets from Iran and Central Asia

Original artefacts woven by tribal and village women for use in their homes, tents and on migration, and as symbols of identity and status on important occasions like weddings. Mostly dating to the 19th century.

*Opening Times*

Sat 2nd April - Sat 9th April  
 9.30am - 5.00pm  
 Sunday 3rd April  
 11.00am - 4.00pm

Our gallery is wheelchair accessible

